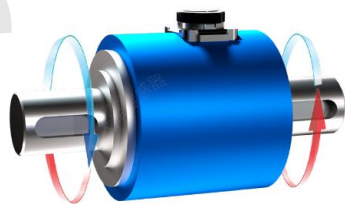


## JUL-TQ09 扭矩传感器



### ■安装/受力 Installation/force

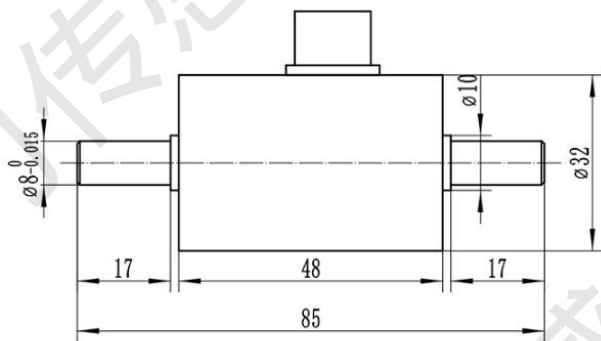


### ■特点与用途 Features&Applications

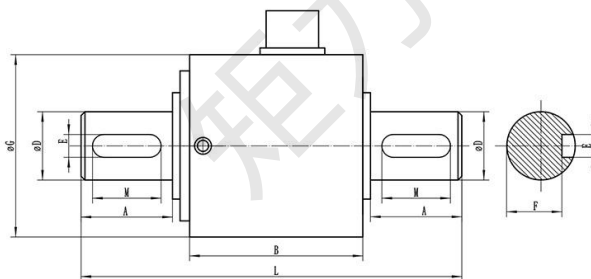
- ▶ 结构简单, 安装使用方便
- ▶ 精度高, 稳定性好
- ▶ 采用高精度电阻应变式原理, 动态响应频率高
- ▶ 适用于静态扭力测试, 扭力扳手等非连续旋转的扭力测试控制设备

技术参数 Technical specifications		
量程	Capacity	0.1~5KNm (可选)
输出灵敏度	Rated output	1.0-2.0mV/V
零点输出	Zero balance	±0.02mV/V
非线性	Non-linearity	0.3%F.S
滞后	Hysteresis	0.25%F.S
重复性	Repeatability	0.25%F.S
输入电阻	Input impedance	350/750±10Ω
输出电阻	Output impedance	350/700±5Ω
绝缘电阻	Insulation	≥5000MΩ/100VDC
激励电压	Recommended excitation	5~15VDC
温度灵敏度漂移	Temp.effect.on output	0.025%F.S./10°C
零点温度偏移	Temp.effect.on zero	0.025%F.S./10°C
温度补偿范围	Compensated temp range	-10~60°C
工作温度	Operation temp range	-20~80°C
安全超载	Safe overload	120%
极限超载	Ultimate overload	150%
电缆尺寸	Cable size	Φ5x3000mm

### 外形尺寸 External Dimension



量程(N.m) 0.1-10



量程(N.m)	ΦD	L	A	B	M	E	F	ΦG
1-100	18	100	24	45.5	18	6	14.5	48
200-300	30	105	25	45	18	8	26	48
1000-2000	50	210	73.5	54	60	14	44.5	68
3000-5000	70	238	75.5	76	70	20	62.5	88